

Specifications

| Models | S-60 X / S-60 XC | | S-65 | |
|---------------------------------------|------------------|---------|-------------|---------|
| Measurements | US | Metric | US | Metric |
| Working height maximum* | 64 ft 4 in | 19.79 m | 71 ft | 21.80 m |
| Platform height maximum | 58 ft 4 in | 17.79 m | 65 ft | 19.80 m |
| Horizontal reach maximum | 50 ft 10 in | 15.48 m | 56 ft 2 in | 17.10 m |
| Below ground reach | 5 ft 7 in | 1.70 m | 8 ft 11 in | 2.72 m |
| A Platform length | 3 ft | 0.91 m | 3 ft | 0.91 m |
| B Platform width | 8 ft | 2.44 m | 8 ft | 2.44 m |
| C Height - stowed | 8 ft 11 in | 2.72 m | 8 ft 11 in | 2.72 m |
| Height - stowed Trax | 9 ft 1 in | 2.77 m | 9 ft 1 in | 2.77 m |
| D Length - stowed | 27 ft 11 in | 8.51 m | 31 ft 2 in | 9.50 m |
| Length - transport (jib tucked under) | — | — | 25 ft | 7.60 m |
| E Width (with standard tires) | 8 ft 2 in | 2.49 m | 8 ft 2 in | 2.49 m |
| Width - Trax | 8 ft 6 in | 2.59 m | 8 ft 6 in | 2.59 m |
| F Wheelbase | 8 ft 2.5 in | 2.50 m | 8 ft 2.5 in | 2.50 m |
| G Ground clearance - center | 1 ft 2.5 in | 0.37 m | 1 ft 2.5 in | 0.37 m |

Productivity

| | | | | |
|-------------------------------|----------------------|---------------|----------------------|----------|
| Lift capacity - X | 500 lbs/1000 lbs | 227 kg/454 kg | 500 lbs | 227 kg |
| - XC | 750 lbs/1250 lbs | 340 kg/680 kg | | |
| Platform rotation | 160° | | 160° | |
| Vertical jib rotation | — | | 135° | |
| Turntable rotation | 360° continuous | | 360° continuous | |
| Turntable tailswing | 4 ft | 1.22 m | 4 ft | 1.22 m |
| Drive speed - 4WD stowed | 3.0 mph | 4.8 km/h | 3.0 mph | 4.8 km/h |
| - Trax stowed | 2.3 mph | 3.7 km/h | 2.3 mph | 3.7 km/h |
| - raised or extended | 0.68 mph | 1.1 km/h | 0.68 mph | 1.1 km/h |
| Gradeability - 2WD - stowed** | 30% | | 30% | |
| - 4WD - stowed** | 45% | | 45% | |
| Turning radius - inside | 7 ft 9 in | 2.36 m | 7 ft 9 in | 2.36 m |
| - outside | 18 ft 2 in | 5.54 m | 18 ft 9 in | 5.72 m |
| Controls | 12 V DC proportional | | 12 V DC proportional | |
| Tires - RT Lug | 355/55D 625 | | 355/55D 625 | |

Power

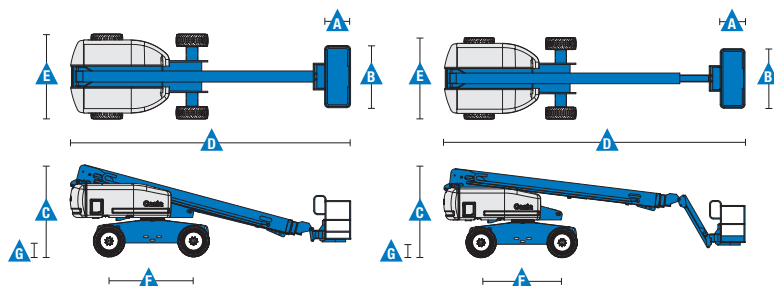
| | | | | |
|-------------------------|--|-------|---------|-------|
| Power source | Ford DSG-423 4 cylinder gas/LPG 75 hp (56 kW) Deutz D2011L03i 3 cylinder diesel 46 hp (34.3 kW) Perkins 404D-22 4 cylinder diesel 51 hp (38 kW) Deutz D2011L04i 4 cylinder turbo charged diesel 74 hp (55 kW) | | | |
| Auxiliary power unit | 12 V DC | | 12 V DC | |
| Hydraulic tank capacity | 45 gal | 170 L | 45 gal | 170 L |
| Fuel tank capacity | 35 gal | 132 L | 35 gal | 132 L |

Weight***

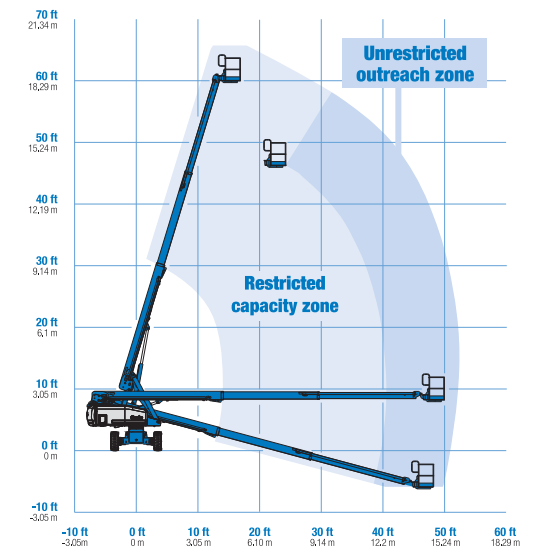
| | | | | |
|--------|------------|-----------|------------|-----------|
| 2WD | 20,570 lbs | 9,330 kg | 22,100 lbs | 10,024 kg |
| 4WD | 20,740 lbs | 9,408 kg | 22,270 lbs | 10,102 kg |
| Trax | 25,430 lbs | 11,535 kg | 26,960 lbs | 12,229 kg |
| XC**** | 21,967 lbs | 9,964 kg | | |

Standards Compliance

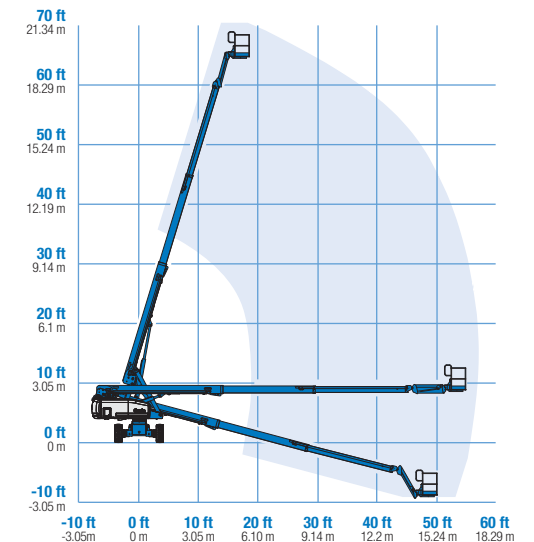
ANSI A92.5, CSA B354.4, EN 280, AS 1418.10



Range Of Motion S-60 X



Range Of Motion S-65



* The metric equivalent of working height adds 2 m to platform height. U.S. adds 6 ft to platform height.

** Gradeability applies to driving on slopes, see operator's manual for details regarding slope ratings.

*** Weight will vary depending on slope, see operator's manual for details regarding slope ratings.

**** S-60 XC not available with Trax system

Features

Standard Features

Measurements

S-60 X*

- 66 ft (20.30 m) working height
- 50 ft 10 in (15.48 m) horizontal reach
- 500 lb (227 kg) unrestricted and 1000 lb (454 kg) restricted lift capacity

S-60 XC*

- 66 ft (20.30 m) working height
- 50 ft 10 in (15.48 m) horizontal reach
- 750 lb (340 kg) unrestricted and 1250 lb (680 kg) restricted lifting capacity

S-65

- 71 ft (21.80 m) working height
- 56 ft 2 in (17.10 m) horizontal reach
- 500 lb (227 kg) lift capacity

Productivity

- Self-leveling platform
- Hydraulic platform rotation
- Fully proportional Hall effect joystick controls
- Fuel select switch on platform and ground control panels (Gas/LPG models)
- Drive enable
- AC power cord to platform
- Tilt alarm
- Descent alarm
- Hour meter
- Horn
- 360° continuous turntable rotation
- Positive traction drive
- Two speed wheel motors

Power

- 12 V DC auxiliary power
- Anti-restart engine protection
- Auto engine fault shutdown
- Swing out engine tray
- Deutz intake air heater

Easily Configured To Meet Your Needs

Platform Options

- Steel 8 ft (2.44 m) (standard)
- Steel 6 ft (1.83 m)
- 8 ft (2.44 m) tri-entry

Jib Options

- Non-jib
- 5 ft (1.52 m) jib boom

Engine Options

- Ford gas/LPG 75 hp (56 kW)
- Deutz diesel 46 hp (34.3 kW)
- Perkins diesel 51 hp (38 kW)
- Deutz turbo diesel 74 hp (55 kW)

Drive Options

- 2WD
- 4WD

Axle Options

- Active oscillation
- Non-oscillating

Tire Options

- Rough terrain air-filled (standard)
- Rough terrain foam-filled
- Rough terrain non-marking (air or foam-filled)
- High flotation air-filled
- Sealant treated air-filled
- Track system QTS-R42 Loegering



Options & Accessories

Productivity Options

- Platform swing gate
- Half-mesh platform inserts with swing gate
- Platform top auxiliary rail
- Arc Pro 275™ Heavy-Duty Welder package
- Welder Ready package
- Weld leads to platform
- Air line to platform
- Hydraulic oil cooler
- Biodegradable hydraulic oil
- Hostile environment kit
- Deluxe hostile environment kit
- Aircraft protection package (6 ft platform)
- Thumb rocker steer
- Tool tray
- Alarm package
- Panel cradle package*
- Lockable platform control box covers
- Second battery
- Tow package
- FM safety approval**
- Work light package

Power Options

- Engine gauge package
- AC generator packages (110V/-220V/50Hz, 3000W)
- Cold Weather Packages
- Diesel scrubber/spark arrestor muffler (catalytic muffler)
- LPG tank 33.5 lb (15.19 kg) capacity
- Intake air pre-cleaner

* Available on select models

** Available only with Ford engine

Genie United States

18340 NE 76th Street
P.O. Box 97030
Redmond, Washington 98073-9730
Telephone +1 (425) 881-1800
Toll Free in USA/Canada +1 (800)-536-1800
Fax +1 (425) 883-3475

Genie Europe

The Maltings
Wharf Road
Grantham NG31 6BH
UK
Telephone +44 (0)1476 584333
Fax +44 (0)1476 584334
Email: AWP-InfoEurope@terex.com

Distributed By:

Effective Date: February, 2012. Product specifications and prices are subject to change without notice or obligation. The photographs and/or drawings in this document are for illustrative purposes only. Refer to the appropriate Operator's Manual for instructions on the proper use of this equipment. Failure to follow the appropriate Operator's Manual when using our equipment or to otherwise act irresponsibly may result in serious injury or death. The only warranty applicable to our equipment is the standard written warranty applicable to the particular product and sale and we make no other warranty, express or implied. Products and services listed may be trademarks, service marks or trade names of Terex Corporation and/or their subsidiaries in the USA and many other countries. Genie is a registered trademark of Terex South Dakota, Inc. © 2012 Terex Corporation.